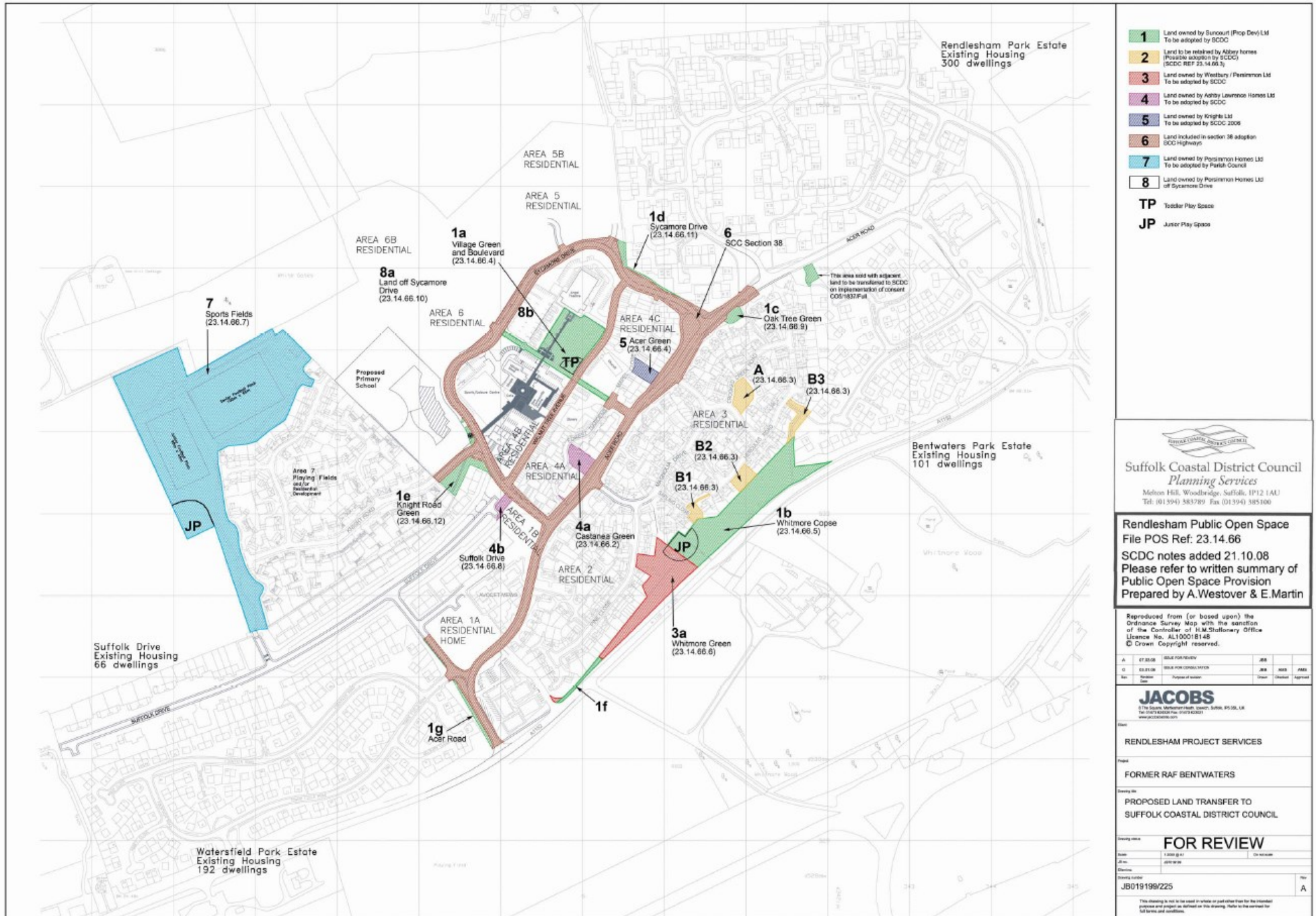


Appendix I: The Rendlesham Master Plan 2006 (Reviewed 2008)



- 1** Land owned by Suncoot (Prop Dev) Ltd
To be adopted by SCDC
- 2** Land to be retained by Abbey Homes
(Possible adoption by SCDC)
(SCDC Ref: 23.14.66.3)
- 3** Land owned by Westbury / Parsimon Ltd
To be adopted by SCDC
- 4** Land owned by Adity Lawrence Homes Ltd
To be adopted by SCDC
- 5** Land owned by Knights Ltd
To be adopted by SCDC 2008
- 6** Land included in section 36 adoption
SCC-Highways
- 7** Land owned by Parsimon Homes Ltd
To be adopted by Parish Council
- 8** Land owned by Parsimon Homes Ltd
off Sycamore Drive
- TP** Toddler Play Space
- JP** Junior Play Space


Suffolk Coastal District Council
Planning Services
 Melton Hill, Woodbridge, Suffolk, IP12 1AU
 Tel: (01394) 383789 Fax: (01394) 385100

Rendlesham Public Open Space
 File POS Ref: 23.14.66
 SCDC notes added 21.10.08
 Please refer to written summary of
 Public Open Space Provision
 Prepared by A. Westover & E. Martin

Reproduced from (or based upon) the
 Ordnance Survey Map with the sanction
 of the Controller of H.M. Stationery Office
 Licence No. AL100018148
 © Crown Copyright reserved.

A	CT	ES	SOLE FOR REVIEW	JRB			
0	03.01.08		SOLE FOR CONSULTATION	JRB	MSB	AMS	
Rev:			Number of Issues:	Created	Checked	Approved	

JACOBS
 100 Brook Hill Drive, Suite 500, Ipswich, UK
 Tel: (01473) 834323 Fax: (01473) 832321
 www.jacobs.com

RENDLESHAM PROJECT SERVICES
 Project:
FORMER RAF BENTWATERS

Serving the:
**PROPOSED LAND TRANSFER TO
 SUFFOLK COASTAL DISTRICT COUNCIL**

Drawing title: **FOR REVIEW**
 Date: 13.09.07
 Drawing No: 02010000
 Drawing Scale: 1:1000
 Drawing Code: JB019199/225
 This drawing is not to be used or relied upon for the intended purpose and is not to be used for any other purpose without the written consent of Jacobs and its clients.